

Introducing **CoxFreeman**

We are an RIBA Chartered Architectural Practice located in the historic Lace Market area of Nottingham.

We are ideally situated to serve Clients throughout the country and the practice has firmly established itself as a leading specialist in the food and associated process industries.

Cox Freeman was formed in 1980 and since then has continued to develop its specialist knowledge of the environmental conditions expected within buildings where hygiene and healthcare are essential. The company's philosophy is one of quality in both design and construction in every project undertaken.



CoxFreeman

If you would like to discuss a project large or small please contact **Alan McCall** or **Culver Epps** by email on info@coxfreeman.co.uk or telephone 0115 950 50 75 visit our website, www.coxfreeman.co.uk or follow us on Twitter @CoxFreeman

Spatial Planning

From room layouts to detailed building and phasing proposals, a three dimensional model can explain design and construction concepts with clarity and accuracy. Our expanding portfolio of work in this area means that we can easily and quickly present complex ideas and layouts in realistic detail.

Through providing our three dimensional services, we are able to identify potential space, phasing, topographical, pedestrian or vehicular constraints for a site or project ahead of time. This in turn allows us to enhance the decision making process for our Clients and consultants.

The practice is versatile enough to adapt our models to suit and inform Clients for any type of project. As a result three dimensional modeling and visualisation has become an increasingly requested service for the practice.

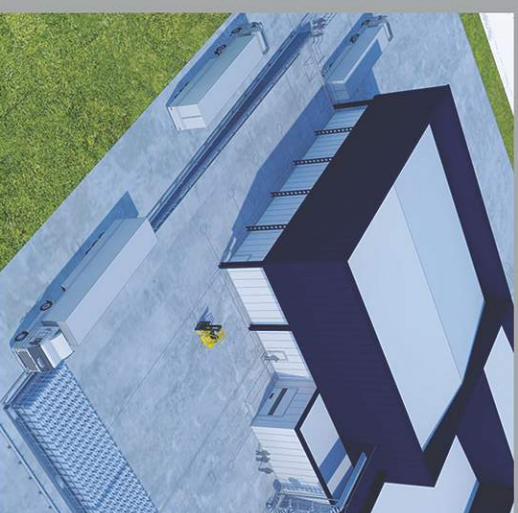
Feasibility Studies

Feasibility studies explore the viability of a project, whilst at the same time identifying any potential issues that may be encountered at a later stage.

Working alongside Clients, Consultants and Statutory Bodies, Cox Freeman can investigate a number of factors that may affect a development. These can range from historical, conservation and environmental factors to those concerning cost, construction, social or visual factors.

Once compiled, this information can be documented and displayed in a variety of ways, be it via presentation boards, bound documents or electronic presentation files for verbal communication.

Our approach to feasibility studies ensures that Clients are in a position from which to make an informed and analytical decision about the viability of all or part of their project confidently.

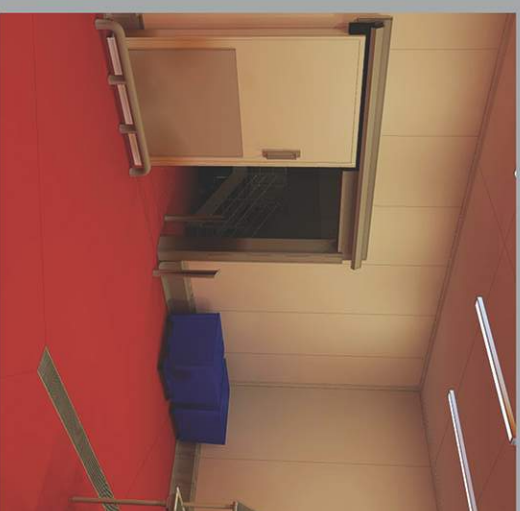
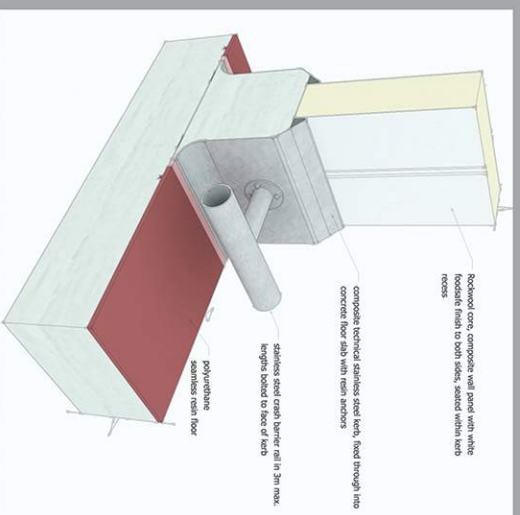


Project Co-ordination

Every aspect of construction can be visualised by Cox Freeman, be it investigating a complex structural strategy or a study into the finishes associated within a particular room.

Service integration through walls and ceilings, drainage design and general product flow can all be agreed, visualised and managed ahead of time.

Cox Freeman have completed a high number of complex installations within existing refurbished or warehouse facilities. The example image (right) was from a project that converted empty warehouse space into a hygienic environment ready to manufacture ready meals. The render shows details such as floor falls, drainage channels, kerbs and metalwork protection. Metalwork protection was an item that the Client had not considered, and the image allowed them to decide on their integration.



Detail Realisation

In addition to the co-ordination of the project as a whole, our modelling has also been instructed on a macro scale. Detail realisation allows the practice to describe varying levels of construction detailing to Clients that may not have an understanding of some of the concepts of the construction industry.

Junctions between floors, walls and ceilings can be easily and quickly constructed and rendered in order to assist with the understanding of construction detailing. This level of service allows Clients to be certain that the detail proposed is the right one for their building, room, product or cleaning operation.

Different floor finishes and kerb details are often designed to suit the occupation and function of each room. The image on the left was part of a compilation of details that provided our Client with a visual level of the varying kerb details for their project.



Photographic Montage

Using existing site photography, our models can be orientated then incorporated into photomontages. This technique further illustrates to Clients, Statutory Bodies and neighbouring sites the full scale of any proposed development. This type of image can prove invaluable for Clients when proposing scheme designs on contentious or complicated sites. Photomontages are also useful to Local Authorities during the Planning process, allowing them to see the likely impact of a proposed design on the existing streetscape.

The image on the right was set up to illustrate to a Client the potential for building a food production facility onto an empty plot of land. This image was formed as part of a Feasibility Study in order to achieve the necessary funding for the project.

Photorealistic Visualisation

Photorealistic visualisation techniques are increasingly used by the Practice to provide internal or external views of a design.

Our models illustrate how the final design will be viewed. Models are orientated to suit the North point of any site in order to provide an accurate representation of how the proposed space will be impacted or enhanced by natural daylight at varying times of the year. Interior models can be constructed with a variety of colour schemes and finishing options.

The rendered image to the left was part of a refurbishment scheme for the conversion of existing amenity space into a new test kitchen. Finishes were applied to the model with realistic material texturing and reflective properties. This presented the most accurate representation of the proposed design in order to be closely costed and gain board approval.



Architects and Design Managers



RIBA 

Chartered Practice

4th Floor, 39 Stoney Street, The Lace Market, Nottingham, NG1 1LX
t 0115 950 5075, f 0115 948 3128, info@coxfreeman.co.uk, www.coxfreeman.co.uk