

CoxFreeman



CoxFreeman

Introducing CoxFreeman

We are an RIBA Chartered Architectural Practice located in the historic Lace Market area of Nottingham.

Being ideally situated to serve Clients throughout the country, the practice has firmly established itself as a leading specialist in the food and associated process industries.

Cox Freeman was formed in 1980 and since then has continued to develop its specialist knowledge of the environmental conditions expected within buildings where hygiene and healthcare are essential. The company's philosophy is one of quality in both design and construction in every project undertaken. The company is fully networked for computer aided design and draughting, using the best software available to both manage and represent projects.



A selection of projects are shown in this brochure, but if you would like to discuss a project large or small please contact **Alan McCall** or **Culver Epps** by email on info@coxfreeman.co.uk or telephone 0115 950 50 75

For queries regarding our Building Information Modelling capabilities then please contact our BIM Manager **Allan Smithson**

Visit our website, www.coxfreeman.co.uk or follow us on Twitter @CoxFreeman

Three-Dimensional Workflows

Cox Freeman currently have over 10 years experience with the utilisation of three-dimensional software on construction projects. Spatial planning, feasibility studies, detail realisation, photorealistic visualisation or photographic montage services have been employed across a variety of projects within the food industry.

These services have proved increasingly popular with our clients and project stakeholders on past schemes. Although providing an alternative and supplementary method of information, the design process has been fairly fragmented from other members of the design team, a term affectionately known as 'Lonely BIM'.

Cox Freeman have invested in industry leading BIM authoring software, opening enhanced methods of working and increasing our value of service to clients.

What is BIM?

BIM is an acronym for Building Information Modelling and encompasses an overarching methodology of collaborative work between project stakeholders in the construction industry.

Whether client, design team member or contractor, shared structured three-dimensional model information can be used in a variety of ways to illustrate and interrogate the project.

The Practice has invested in Graphisoft ARCHICAD for their BIM authoring software. This enables us to embed a greater amount of data within models that two-dimensional and 'Lonely BIM' workflows cannot provide.

This allows us to provide clients with an increased service, greater level of detail, optimised efficiencies and reduced waste across all stages of a project.

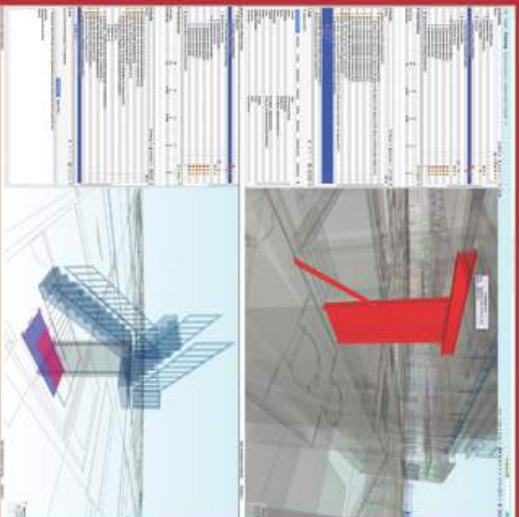


Open BIM

By embracing the emerging changes in the construction industry, the Practice has taken the opportunity to develop food specific workflows and data sets within our standard office templates. This allows us greater flexibility to communicate key design information with a greater level of detail to all project collaborators.

Cox Freeman are firm believers in the OpenBIM program, which encourages others to embrace a transparent and open workflow. We believe that all team members should be able to participate on a project regardless of their discipline, IT infrastructure, choice of software and individual skill set.

As such we are able to share model information in a variety of communication files, whether that be .PDF, .DWG, .BCF, .IFC (Industry Foundation Class) or BIMx, which is easily accessible from most devices.



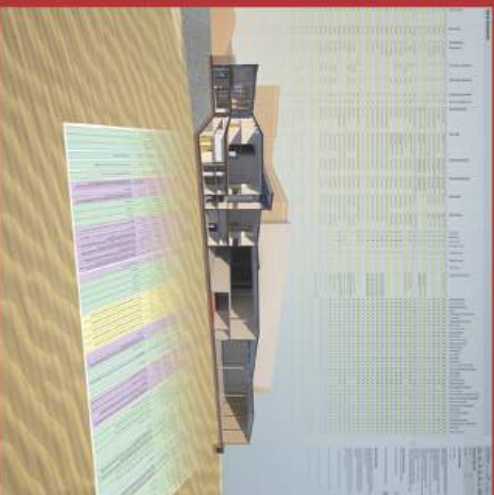
Project Co-ordination

The BIM collaborative methodology allows Cox Freeman to directly share geometric and metadata with design consultants, allowing for cross pollination of individual disciplinary information to form a single cohesive working model.

Once federated into a single model, our software infrastructure allows us to examine and scrutinise shared information using a detailed checking process.

This procedure enables us to highlight and report potential construction issues and clashes long before materials are delivered to site, or costly installations are fabricated.

The benefits of our investment in BIM is directly transferred to our clients - reduced risk, increased efficiency, flexible communication methods and a greater level of design data available at handover.



Our Services

Cox Freeman can offer the following services to help you realise your BIM project:

- Documentation Authoring
 - Pre and Post Contract BIM Execution Plans (BEP)
 - Task Information Delivery Plans (TIDP)
 - Master Information Delivery Plans (MIDP)
 - Model Production and Delivery Tables (MDTP)
- Model Services
- Architectural Model Production and Authoring
 - Model Co-ordination with Key Design Consultants
- Other Services
- Advice regarding BIM Implementation
 - Management of Common Data Environments (CDE)
 - Model Federation
 - Model Checking and Clash Reporting

Asset and Facilities Management

Digital assets contained within our models allow us to consolidate details and specifications provided by the supply chain into an industry recognised data set.

This data schema is commonly known as COBie[®] and provides consistent, structured asset information. This proves to be useful for future owner / occupiers in strategic decision making, post building occupation. (*Construction Operations Building Information Exchange*).

The COBie method of information exchange allows all members of the construction team to pull key information into a shared schema at defined stages of a project. This ensures that documentation provided to our clients at handover is in a format that can be of immediate use. This also ensures an easier transition for building occupants and an accurate information database for future reference.



Architects to the food industry

CoxFreeman

RIBA 

Chartered Practice

4th Floor, 39 Stoney Street, The Lace Market, Nottingham, NG1 1LX
t 0115 950 5075, f 0115 948 3128, info@coxfreeman.co.uk, www.coxfreeman.co.uk